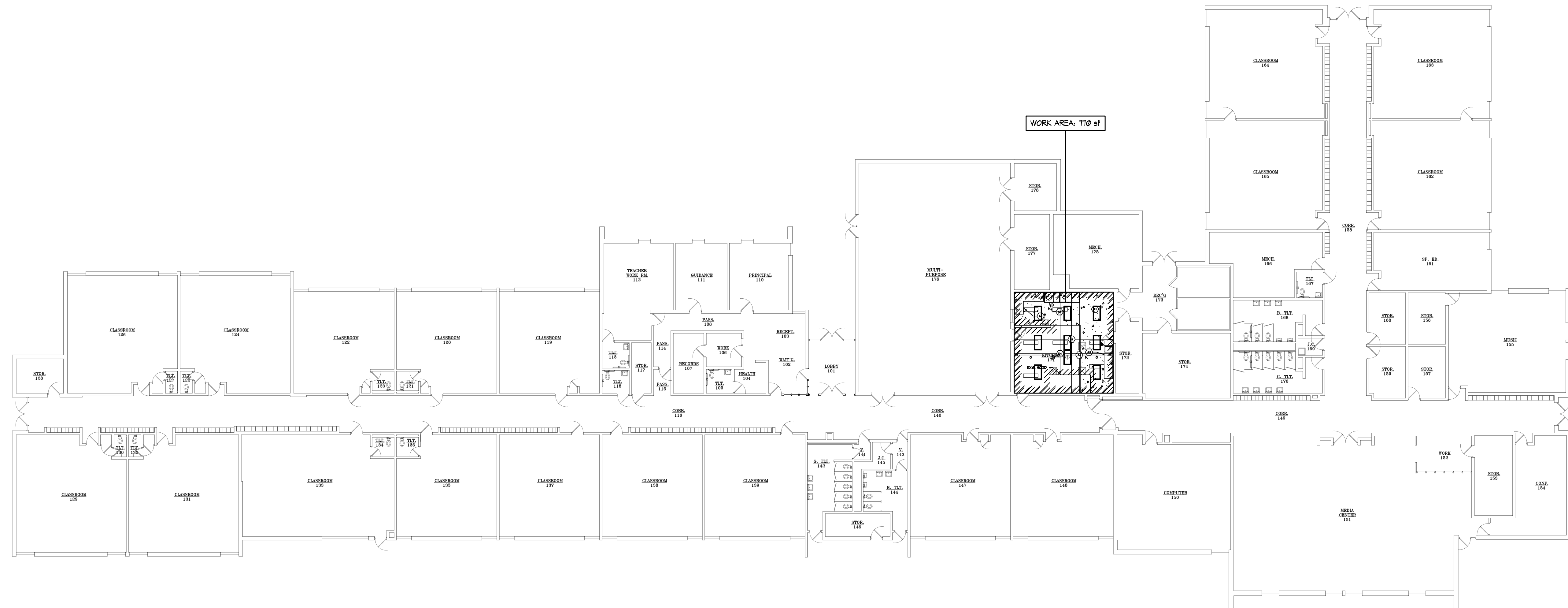


WEST BRANCH - ROSE CITY AREA SCHOOLS - 2022 KITCHEN PROJECTS

ROSE CITY ELEMENTARY KITCHEN REMODELING

ROSE CITY, MICHIGAN



COMPOSITE FLOOR PLAN

SCALE: $\frac{1}{8}'' = 1'-0''$

PROJECT DESCRIPTION

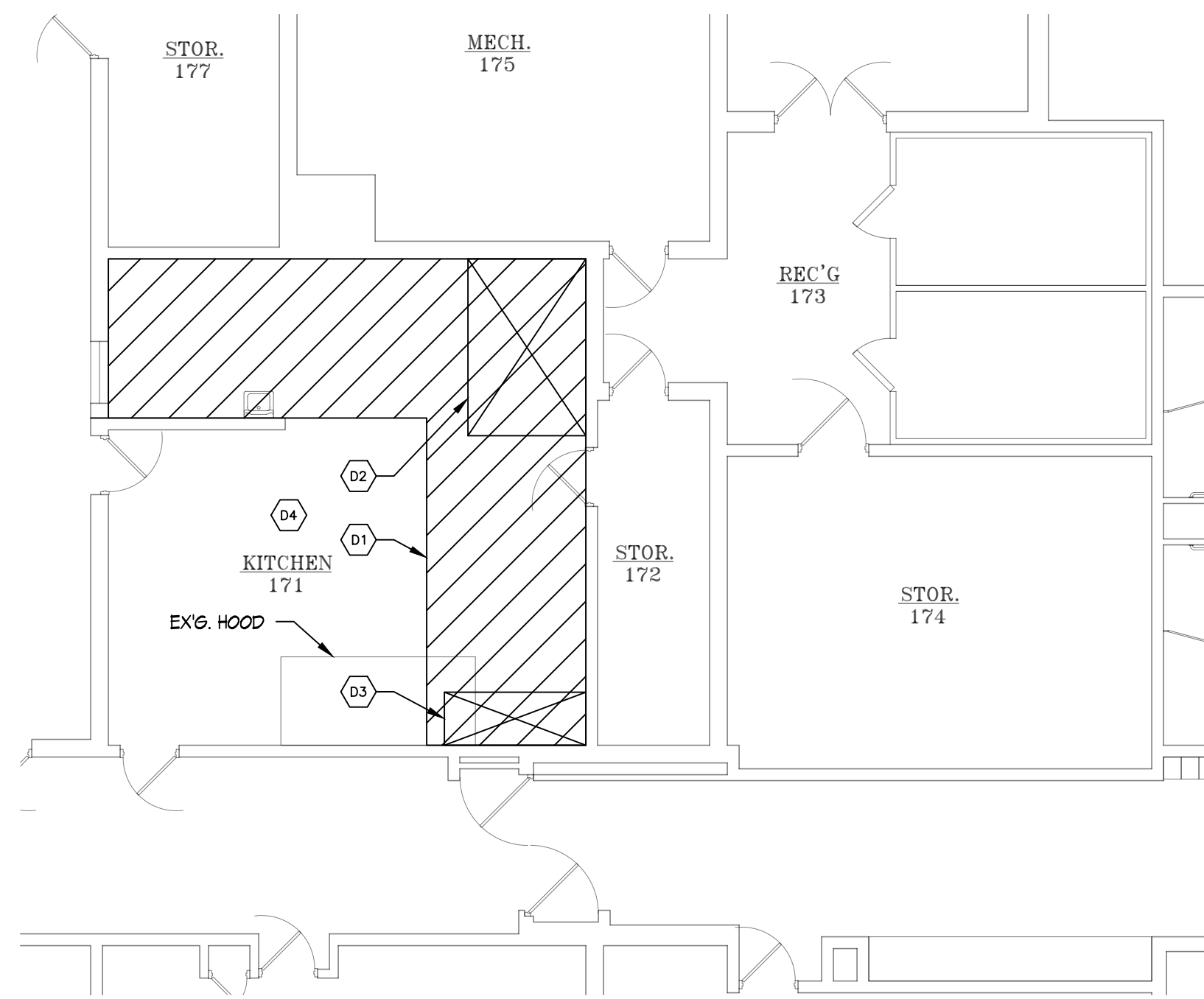
IN GENERAL, WORK OF THE CONTRACT INCLUDES:
 1. REMOVAL AND REPLACEMENT OF EXISTING CONCRETE FLOOR SLAB TO ALLOW FOR REPLACEMENT OF UNDER FLOOR SANITARY PIPING AND PLUMBING FIXTURES AS INDICATED.
 2. INSTALLATION OF NEW FLUID APPLIED FLOORING AND PATCHING/TOPPING EXISTING FLUID APPLIED FLOORING.
 3. NEW KITCHEN EQUIPMENT AS INDICATED (REMOVAL OF EXISTING, SUPPLY AND INSTALLATION BY OTHERS).

BUILDING DATA

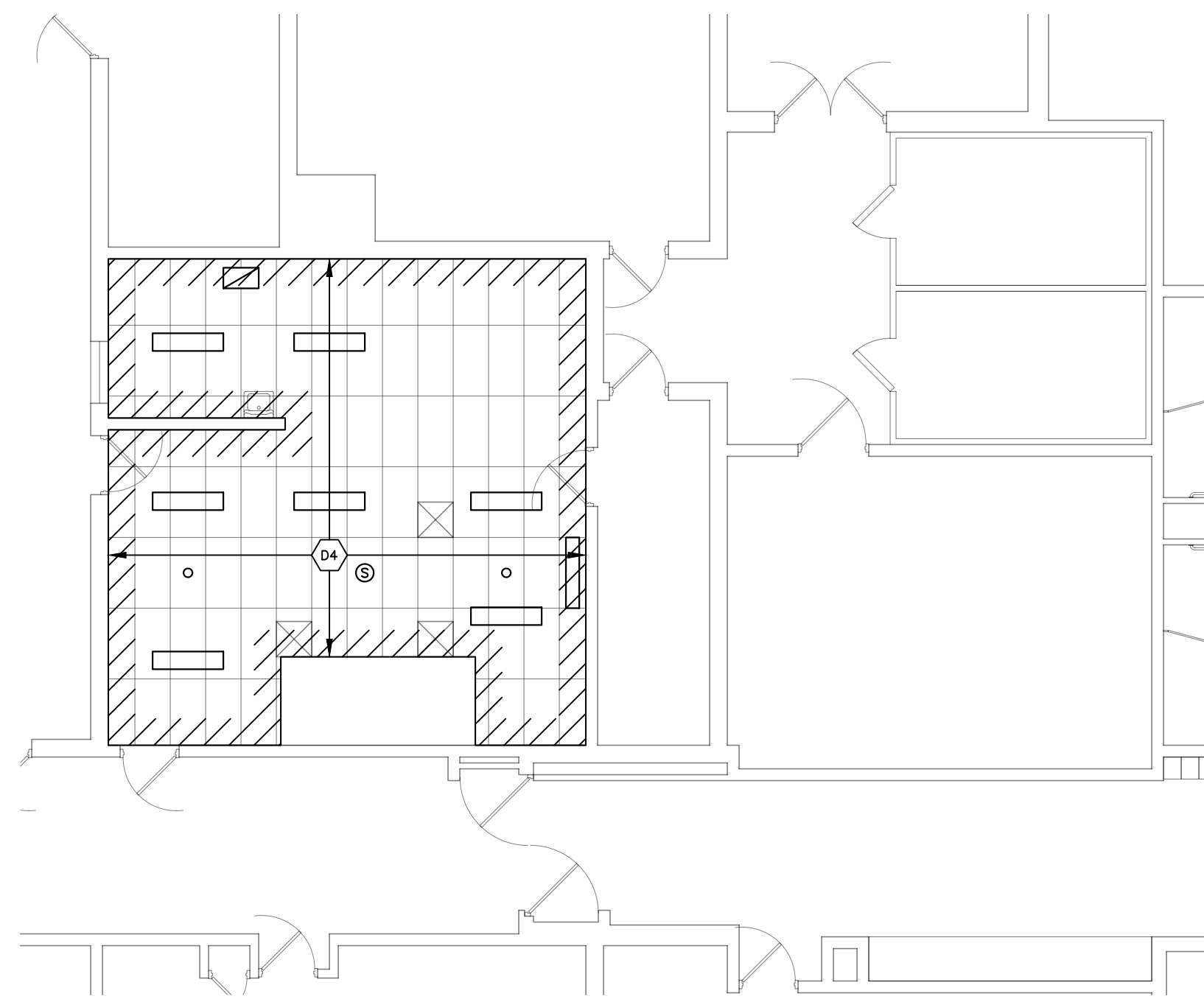
APPLICABLE CODES
 2015 MICHIGAN CODE SERIES
 2012 NFPA 101 LIFE SAFETY CODE
 USE AND OCCUPANCY CLASSIFICATION
 USE GROUP E - EDUCATIONAL
 CONSTRUCTION TYPE
 MBC CONSTRUCTION TYPE IIB
 NFPA 101 CONSTRUCTION TYPE II(000)
 BUILDING AREA
 40,087 sf
 FIRE SUPPRESSION
 NONE

SHEET INDEX

A1 COMPOSITE FLOOR PLAN / PROJECT INFORMATION
 A2 PARTIAL FLOOR PLANS - DEMOLITION AND NEW WORK
 P1 FLOOR PLAN - MECHANICAL
 E1 FLOOR PLAN - ELECTRICAL



FLOOR PLAN - DEMOLITION
 NORTH
 SCALE: 1/8" = 1'-0"



CEILING PLAN - DEMOLITION
 NORTH
 SCALE: 1/8" = 1'-0"

GENERAL DEMOLITION NOTES

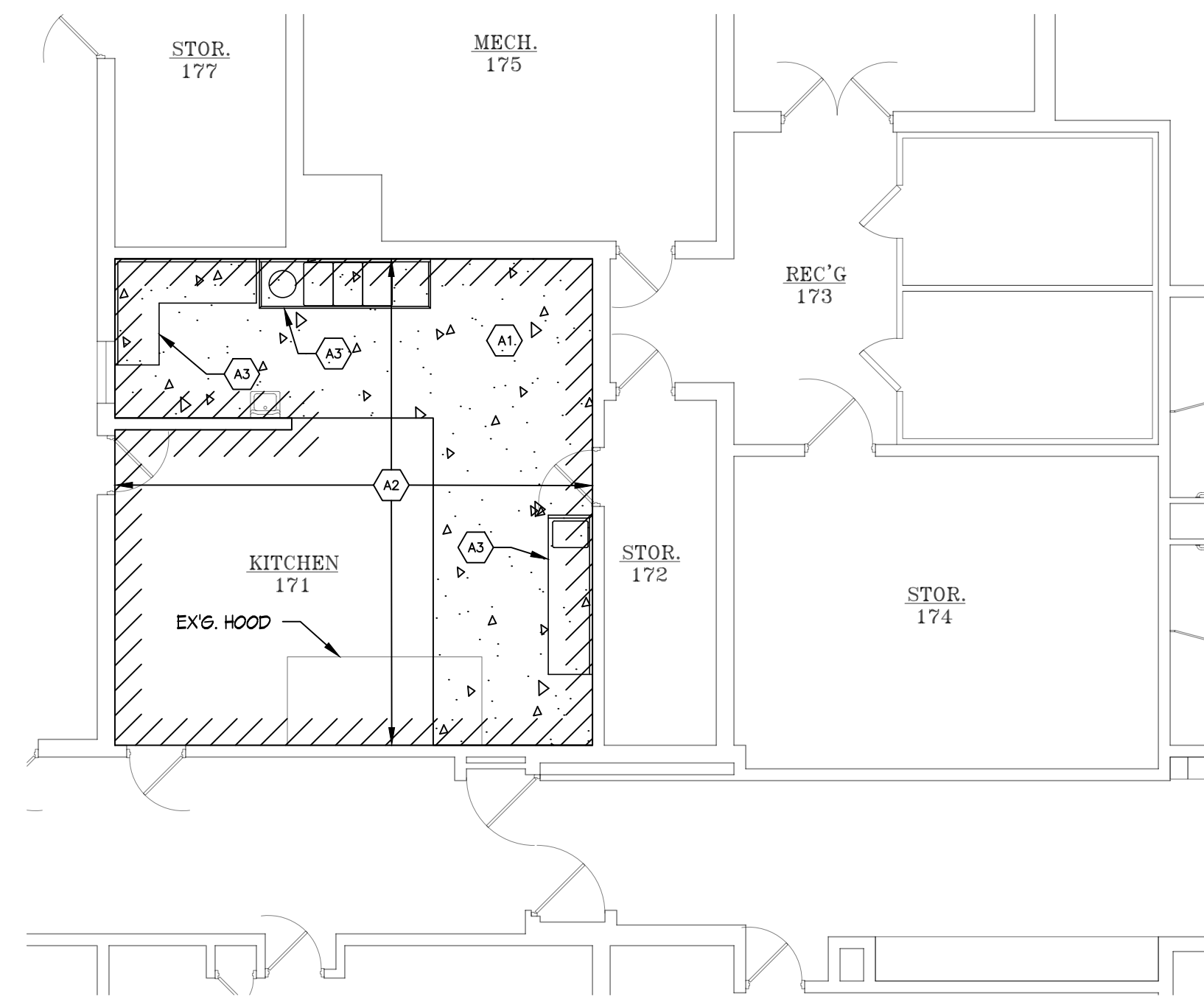
REMOVE EX'G ASSEMBLIES TO THE EXTENT REQUIRED FOR THE INSTALLATION OF NEW WORK, AND TO ALLOW FOR CONNECTION OF NEW WORK TO EX'G ADJACENT CONSTRUCTION. KEYED DEMOLITION NOTES ARE GENERAL IN NATURE. ALL EX'G CONDITIONS ARE TO BE FIELD VERIFIED. CONTRACTOR SHALL MAKE NECESSARY ADJUSTMENTS TO DEMOLITION AS REQ'D TO ACHIEVE THE OVERALL DESIGN INTENT.

CONTRACTOR SHALL REMOVE EX'G FLOORING FINISHES AS REQ'D TO ALLOW FOR NEW CONSTRUCTION AND/OR THE INSTALLATION OF NEW FINISHES AS NOTED.

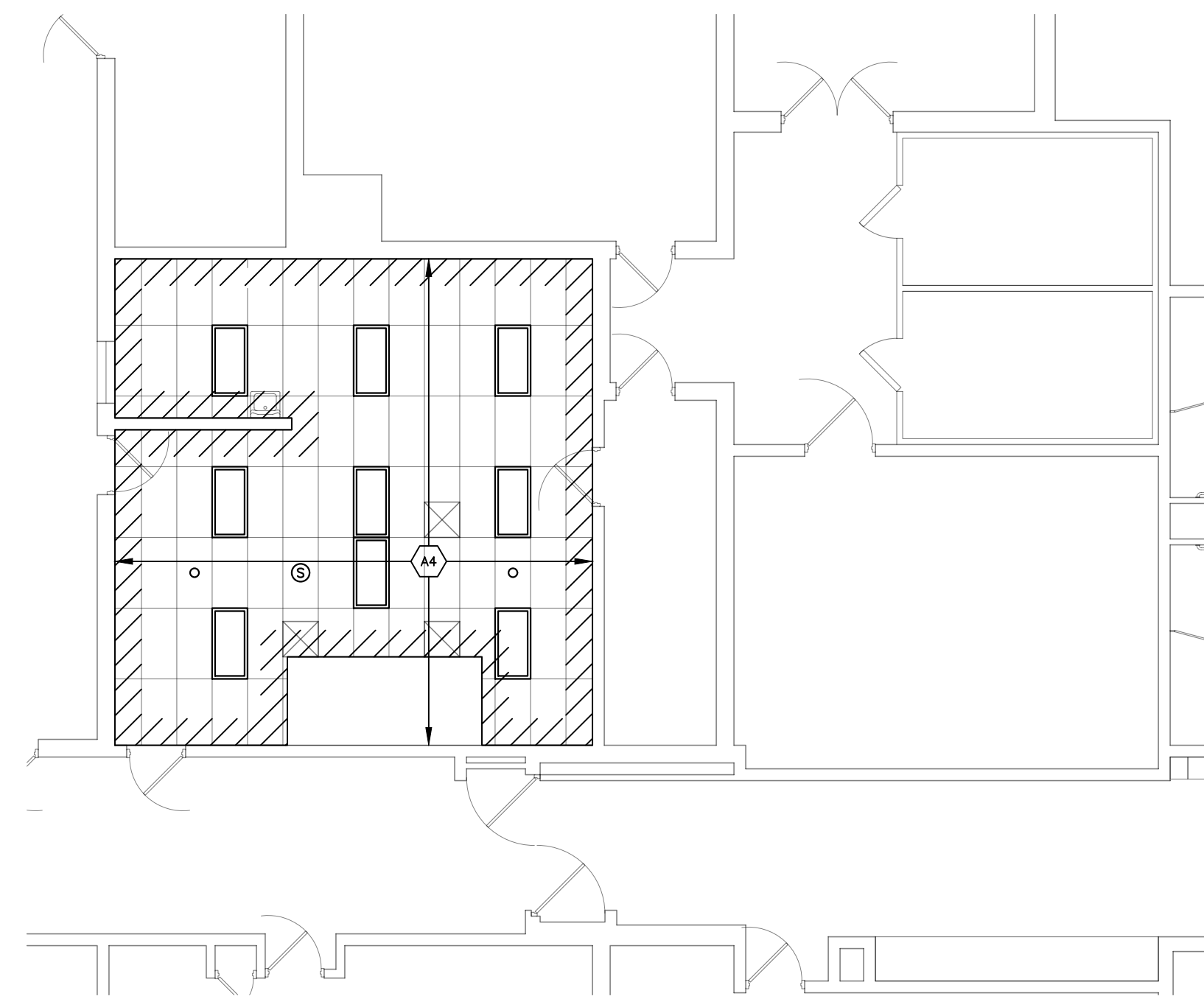
MODIFICATION OF BUILDING STRUCTURAL LOAD BEARING MEMBERS EXCEPT AS DESCRIBED HEREIN OR APPROVED BY THE ARCHITECT IN WRITING IS STRICTLY PROHIBITED. STRUCTURAL MODIFICATIONS DEPICTED HEREIN ARE BASED UPON INFORMATION DERIVED FROM THE OWNERS RECORD. CONTRACTOR SHALL REMOVE FINISHES FROM FRAMING AND SHALL CONSULT ARCHITECT FOR DIRECTION ON MODIFICATION OR REMOVAL OF LOAD BEARING STRUCTURAL ITEMS (WALLS, COLUMNS, BEAMS, JOISTS, AND TRUSSES) NOT SPECIFICALLY INDICATED HEREIN.

KEYED DEMOLITION NOTES

- D1 SAW-CUT AND REMOVE EX'G. CONCRETE FLOOR SLAB.
- D2 REMOVE CONCRETE DEPRESSION INFILL AND UNDERLYING CONCRETE SLAB IN AREA INDICATED.
- D3 REMOVE DEPRESSED CONCRETE SLAB IN AREA INDICATED.
- D4 DISCONNECT AND REMOVE EX'G. ELECTRICAL DEVICES FOR REINSTALLATION, REMOVE EX'G. LIGHT FIXTURES TO BE REPLACED, AND REMOVE EX'G. SUSPENDED CEILING PADS. REFER TO ELECTRICAL DRAWINGS.



FLOOR PLAN - NEW WORK
 NORTH
 SCALE: 1/8" = 1'-0"



CEILING PLAN - NEW WORK
 NORTH
 SCALE: 1/8" = 1'-0"

KEYED CONSTRUCTION NOTES

- A1 COMPACT EX'G. SUBGRADE AND INSTALL NEW VAPOR BARRIER AND 4" CONCRETE SLAB w/ 6x6-W2.1xW2.1 W.W.M. BOND AND DOWEL NEW CONCRETE TO EXISTING CONCRETE w/ 12" #4 BARS AT 2'-0" O.C. DRILL AND EPOXY EMBED DOWELS 6" IN EX'G. SLAB. APPLY CONCRETE BONDING AGENT TO EX'G. CONCRETE.
- A2 INSTALL NEW FLUID-APPLIED FLOORING AND COVE BASE TO MATCH EXISTING ON NEW CONCRETE SLAB. PATCH / TOP COAT EXISTING ADJACENT FLUID-APPLIED FLOORING TO REMAIN.
- A3 NEW KITCHEN EQUIPMENT BY OTHERS.
- A4 INSTALL NEW SUSPENDED CEILING PADS IN EXISTING GRID. PATCH GRID AS REQ'D. WHERE DAMAGED OR WHERE MECHANICAL GRILLES WERE REMOVED. REINSTALL ELECTRICAL DEVICES. REFER TO MECHANICAL AND ELECTRICAL DRAWINGS.

PLUMBING SCHEDULE

MARK	FIXTURE	MANU.	MODEL	SAN.	HOT	COLD	MAXIMUM FLOW RATE	REMARKS
S-1	PREP SINK	*	*	1 1/2"	1/2"	1/2"	5 GPM	W/ LK721B BATTERY POWERED, SENSOR ACTIVATED FAUCET, SEE NOTE#4 W/ WILKINS ZW3870T-4P THERMOSTATIC MIXING VALVE, CONCEALED ARM SUPPORT
S-2	3 COMPARTMENT SINK	*	*	2"	1/2"	1/2"	2.2 GPM	W/ RIGHT AND LEFT DRAIN BOARDS, 1/2" FLUJET 2" LEVER FAUCET #LK907BR07LZH, THREADED HOSE W/ 7" BUCKET HOOK RIGHT HAND FAUCET T&S BRASS #B2250 SPRAY HOSE ASSEMBLY W/44" STAINLESS STEEL HOSE & 24" RISER
FS-1	FLOOR SINK	ZURN	Z1910-5NH	3"	-	-	-	W/ 12" HALF TOP GRATE
FS-2	FLOOR SINK	ZURN	Z1910-4NH	4"	-	-	-	W/ 12" HALF TOP GRATE
GT-1	GREASE TRAP	ZURN	GT-2700-50	4" INLET 4" OUTLET	-	-	50 GPM	100 LB. CAPACITY, MOUNT FLUSH TO FLOOR

NOTES:

- SEE KITCHEN EQUIPMENT DRAWINGS FOR ALL ROUGH-IN LOCATIONS OF PLUMBING FIXTURES.
- COVER ALL EXPOSED LAVATORY SANITARY AND DOMESTIC HOT AND COLD WATER PIPING W/ PROFLO PF202WH TRAP COVER.

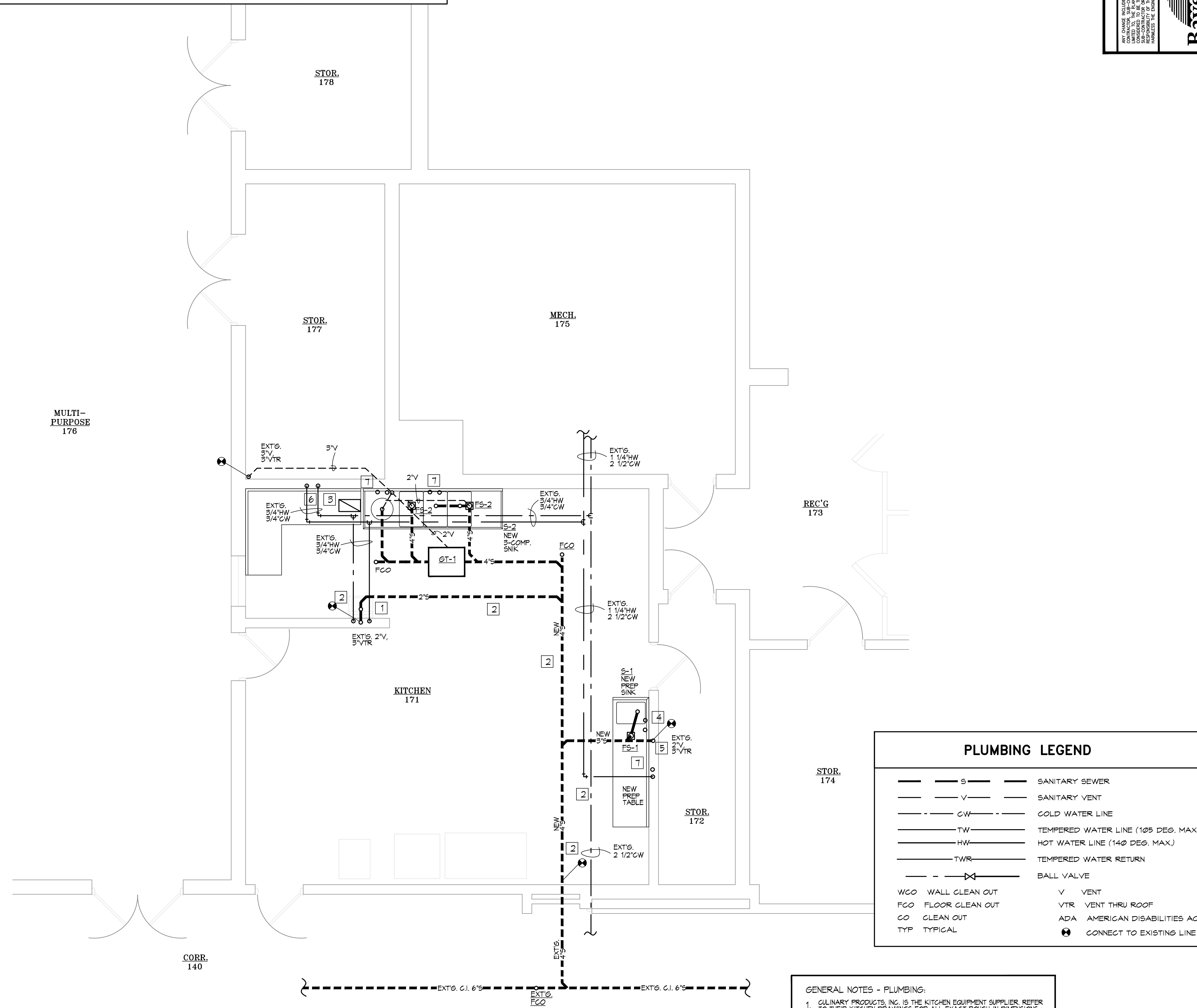
* PROVIDED BY KITCHEN EQUIPMENT SUPPLIER - REFERENCE THEIR DRAWINGS

CHANGES TO PLANS AND SPECIFICATIONS

ANY CHANGE INCLUDING ALTERATION, MODIFICATION, ADDITION, DELETION OR REMOVAL BY THE OWNER, ARCHITECT, ENGINEER OR CONTRACTOR SHALL BE INDICATED BY A CIRCLED NUMBER AND A LETTER. THE CONTRACTOR SHALL NOT BE RESPONSIBLE FOR OBTAINING PERMITS OR RECORDS FOR ANY SUCH CHANGES. THE CONTRACTOR SHALL BE RESPONSIBLE FOR OBTAINING PERMITS AND RECORDS FOR ANY SUCH CHANGES. THE CONTRACTOR SHALL BE RESPONSIBLE FOR OBTAINING PERMITS AND RECORDS FOR ANY SUCH CHANGES.

1874 ANN ARBOR MI
BAYSHORE ARCHITECTURE
ANTHONY P. ESSON ARCHITECT
ENGINEERING, INC. TEL: (248) 489-8025
WWW.BAYSHOREENGINEERING.COM
PROJECT NO. 2108-01

ANTHONY P. ESSON ARCHITECT
PO BOX 479 GAYLORD, MICHIGAN 49734
TELEPHONE: (699) 732-0585



- KEYED PLAN NOTES - MECHANICAL:
- EXISTING HAND SINK TO REMAIN, DISCONNECT/RECONNECT SANITARY PLUMBING TO NEW SAN. DRAIN, AS REQUIRED.
 - REPLACE EXISTING SANITARY LINES WITH NEW PLUMBING AND CONNECT TO NEW SANITARY LINE AS INDICATED.
 - REMOVE AND DISPOSE OF THE EXISTING DISHWASHER EXHAUST AIR GRILLE/ EXHAUST FAN, DUCTWORK, ETC.
 - CONNECT EXISTING CW & HW LINES TO NEW PREP SINK, AS REQUIRED.
 - CONNECT NEW SANITARY UNDER FLOOR TO EXISTING VENT, AS REQUIRED.
 - EXTEND EXISTING 3/4"HW & 3/4"CW ALONG WALL UNDER COUNTER TO TO SERVE NEW EQUIPMENT, AS REQUIRED.
 - P.C. TO PROVIDE 3/4"CW & 1/2" HW AT GARBAGE DISPOSER & 3-COMP. SINK. P.C. TO INTER PIPE DISPOSER, SOLENOID, VACUUM BREAKER, SWIRL SPRAY & PRE-RINSE FAUCET.

PLUMBING LEGEND

---	S	SANITARY SEWER
- - -	V	SANITARY VENT
---	CW	COLD WATER LINE
---	TW	TEMPERED WATER LINE (105 DEG. MAX.)
---	HW	HOT WATER LINE (140 DEG. MAX.)
---	TWR	TEMPERED WATER RETURN
---	○	BALL VALVE
WCO		WALL CLEAN OUT
FCO		FLOOR CLEAN OUT
CO		CLEAN OUT
TYP		TYPICAL
V		VENT
VTR		VENT THRU ROOF
ADA		AMERICAN DISABILITIES ACT
⊙		CONNECT TO EXISTING LINE

- GENERAL NOTES - PLUMBING:
- CULINARY PRODUCTS, INC. IS THE KITCHEN EQUIPMENT SUPPLIER, REFER TO THEIR KITCHEN DRAWINGS FOR ALL EXACT ROUGH-IN DIMENSIONS.
 - EXISTING HW & CW LINES ARE ABOVE LAY-IN CEILING.

FLOOR PLAN - PLUMBING
SCALE: 1/4" = 1'-0"

DRAWING TITLE: **FLOOR PLAN - PLUMBING**

PROJECT TITLE: **WEST BRANCH ROSE CITY AREA SCHOOLS - 2022 KITCHEN PROJECTS**
ROSE CITY ELEMENTARY KITCHEN REMODELING
WEST BRANCH, MICHIGAN

PROJECT NO.: **263-18L**

DATE: **MAY 9, 2022**

SHEET: **P1**

WAVELINX LIGHTING CONTROLS LEGEND

SYMBOL	BRAND	MODEL #	DESCRIPTION
SWL.1	EATON	W1L-X	WAVELINX 1-BUTTON STATION
WAC	EATON	WAC-120	WAVELINX WIRELESS AREA CONTROLLER - 120V

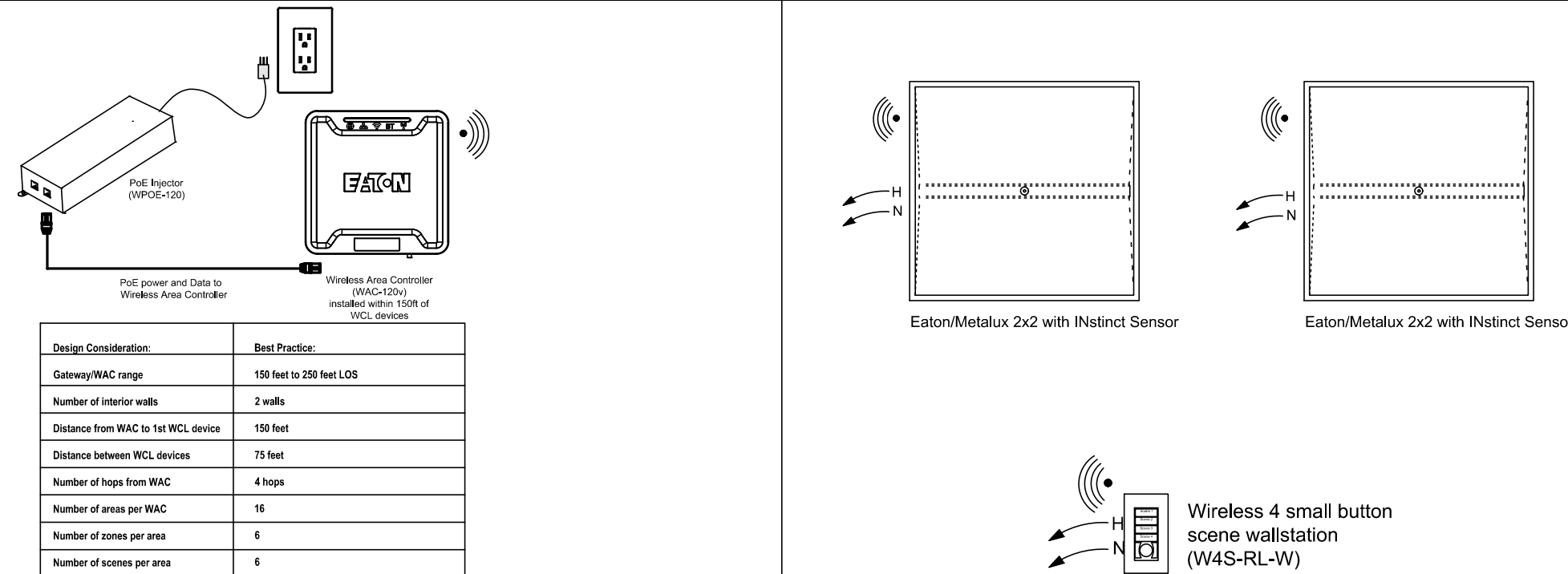
LUMINAIRE LEGEND

- A METALUX #24FPX-4T-L840-HCD-SWPD1, 2'X4' TROFFER, LED (43.2W) (4000K), INTEGRAL SENSOR WIRELESSLY CONTROLLED FIXTURE
- NOTE: A1 METALUX #24FPX-4T-EL14W-L840-HCD-SWPD1, 2'X4' TROFFER, LED (43.2W) (4000K), INTEGRAL SENSOR WIRELESSLY CONTROLLED FIXTURE W/ 1400 LUMEN EMERGENCY BATTERY BACK-UP
- B METALUX #4WEL-LD2-30-SRS-UNV-L840-CD1-SWD1-U, 1'X4' SURFACE MOUNTED LED (35.1W) (4000K)
- NOTE: B1 METALUX #4WEL-LD2-30-SRS-UNV-L840-EL14W-CD1-SWD1-U, 1'X4' SURFACE MOUNTED LED (35.1W) (4000K) - W/1400 LUMEN EMERGENCY BATTERY BACK-UP
- X1 SURE-LIGHTS #LFXRSWH, LED UNIVERSAL EXIT SIGN (3.6W)
- NOTE: ALL FIXTURE TYPES ENDING IN THE NUMBER 1 HAVE BATTERY BACK-UP AND WILL CONTINUE TO OPERATE ON LOSS OF UTILITY SERVICE POWER.

ELECTRICAL SYMBOL LEGEND

SYMBOL	DESCRIPTION	NOTES
X	EXIT SIGN, TYPE X	SEE LIGHTING FIXTURE SCHEDULE FOR TYPES
X	2'X4' LAY-IN FIXTURE, TYPE X	SEE LIGHTING FIXTURE SCHEDULE FOR TYPES
X	EXISTING SPEAKER	
	SPECIAL PURPOSE CONNECTION, AS NOTED	REFER TO SHOP DRAWINGS FOR CONNECTION REQUIREMENTS
J	JUNCTION BOX	WALL OR CEILING MOUNTED - SEE DRAWINGS
FB	FLOOR BOX, TOMBSTONE TYPE	LEGRAND #B00GILCK + 825FCK + 525H FLOOR BOX + CONVERSION KIT + TOMBSTONE
	G.F.I.C. OUTLET	G.F.I.C. OUTLET OR G.F.I.C. BREAKER - SEE DRAWINGS
	EXISTING PANEL W/ LIGHTING/BRANCH CIRCUITS	
	DUAL LOW VOLTAGE DATA/PHONE OUTLET	DENOTES DATA/PHONE WALL OUTLET. (SEE DETAIL)
AC	ABOVE COUNTER	
A-21	CIRCUIT FROM PANEL A, CIRCUIT 21	
EX	EXISTING	

Eaton WaveLinx Wireless Typical-(See plans for actual components)



- #### KEYED PLAN NOTES - ELECTRICAL:
- REUSE EXISTING LIGHTING CIRCUIT FOR NEW LIGHTS.
 - REMOVE AND DISPOSE OF EXISTING LIGHT FIXTURES, SHOWN AS A DASHED OUTLINE.
 - REMOVE AND DISPOSE OF EXISTING LIGHT FIXTURES. NEW FIXTURES ARE SHOWN IN PLACE OF EXISTING FIXTURES.
 - EXISTING MAKE-UP AIR TO REMAIN.
 - RELOCATE EXISTING SPEAKER, AS SHOWN.
 -

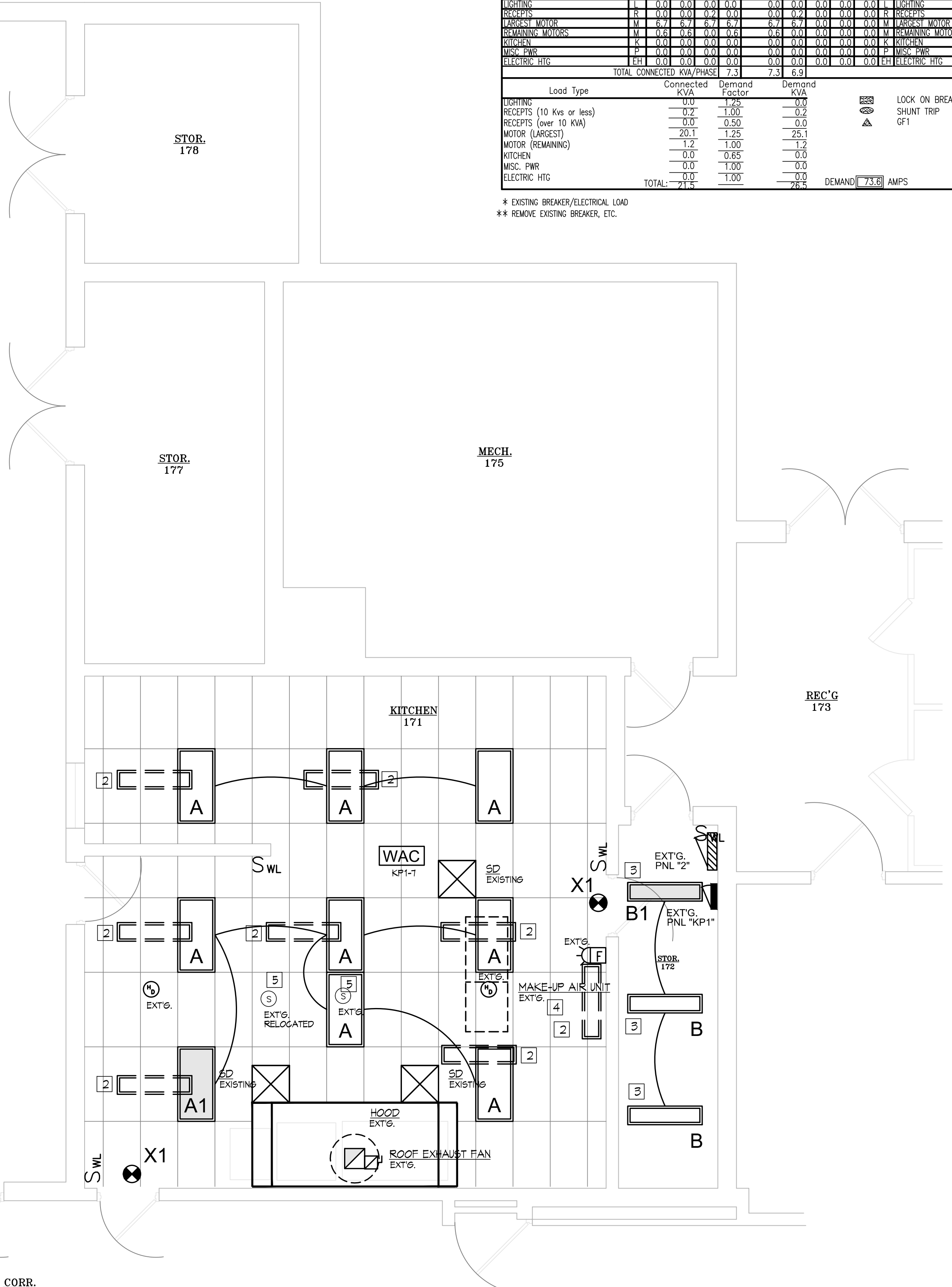
BRANCH CIRCUIT WIRE SIZE/LENGTH SCHEDULE

MAX. BRANCH CIRCUIT AMPS	MAX. CIRCUIT LENGTH (FEET) TO FIRST CONNECTION						
	50'	75'	100'	125'	150'	<300'	<500'
15	#12	#10	#10	#10	#8	#4	#2
20	#10	#10	#10	#8	#8	#3	#1
30	#8	#6	#6	#6	#4	#2	

NOTES:
 1. REFER TO SPECIFICATIONS FOR WIRE TYPE.
 2. SCHEDULE IS BASED UPON A MAXIMUM 3% VOLTAGE DROP ON 120V CIRCUITS.
 3. FOR LENGTHS BETWEEN TABLED VALUES - USE LONGER LENGTH.

Panel	MAN. SIZE & TYPE:	125A MLD	LOCATION	STORAGE #172			
EXT'G. 2A	120V 208 V.	3 PH. 4 W.	FEEDER	SEE ONE-LINE DIAGRAM			
SO. 'D' OOPANELBOARD	MOUNTING SURFACE		FROM	DISTRIBUTION PANEL "2"			
	POLES/SECTIONS	12 \ 1	REMARKS	GROUND BUS BAR.			
			MIN. RMS AMPS	AIC 22,000			
LOAD DESCRIPTION	CU	LOAD/PHASE	BRKR	POLE	BRKR	LOAD/PHASE	DESCRIPTION
* KITCHEN HOOD EXHAUST FAN/REF	10	635	20	2	20	780	MARK-UP AIR UNIT, MAU-1
* CONVEYOR BROCPASTE	10	635	20	2	20	780	SPAKE
* NEW MAKE-UP AIR UNIT, MAU-1	10	6700	70	10	70	112	SPAKE
	10	6700	70	10	70	112	SPAKE
KVA LOAD SUMMARY							
LIGHTING	1	0.00	0.00	0.00	0.00	0.00	LIGHTING
RECEPTS	1	0.00	0.00	0.00	0.00	0.00	RECEPTS
RECEPTS (over 10 KVA)	1	0.00	0.00	0.00	0.00	0.00	RECEPTS
MOTOR (LARGEST)	1	0.00	0.00	0.00	0.00	0.00	MOTOR
MOTOR (REMAINING)	1	0.00	0.00	0.00	0.00	0.00	MOTOR
KITCHEN	1	0.00	0.00	0.00	0.00	0.00	KITCHEN
MISC. PWR	1	0.00	0.00	0.00	0.00	0.00	MISC. PWR
ELECTRIC HTG	1	0.00	0.00	0.00	0.00	0.00	ELECTRIC HTG
TOTAL CONNECTED KVA/PHASE		7.3	7.3	6.9			
Demand							
LIGHTING	0.0	1.25	0.0				
RECEPTS (10 Kvs or less)	0.2	1.00	0.2				
RECEPTS (over 10 KVA)	0.0	0.50	0.0				
MOTOR (LARGEST)	20.1	1.25	25.1				
MOTOR (REMAINING)	1.2	1.00	1.2				
KITCHEN	0.0	0.65	0.0				
MISC. PWR	0.0	1.00	0.0				
ELECTRIC HTG	0.0	1.00	0.0				
TOTAL	21.3	1.00	26.6				DEMAND 73.8 AMPS

* EXISTING BREAKER/ELECTRICAL LOAD
 ** REMOVE EXISTING BREAKER, ETC.



FIRE ALARM & FIRE PROTECTION KEY

SYMBOL	DESCRIPTION	PART NO.	QTY.
KS	HORN STROBE DEVICE	EXISTING	EXT'G
FD	STROBE DEVICE	EXISTING	EXT'G
F	MANUAL PULL STATION	EXISTING	EXT'G
h	HEAT DETECTOR	EXISTING	EXT'G
s	DUCT SMOKE DETECTOR	NEW	1

- #### GENERAL NOTES:
- VERIFY DOOR SWINGS AND CORRESPONDING SWITCH LOCATIONS WITH ARCHITECTURAL DRAWINGS.
 - CONNECT ALL EXIT SIGNS AND EMERGENCY/EGRESS FIXTURES TO THE NEAREST LIGHTING CIRCUIT.
 - VERIFY CEILING GRID LAYOUT WITH ARCHITECTURAL REFLECTED CEILING PLANS.
 - THE LIGHTS THAT ARE SHADED AND/OR DESIGNATED WITH A LETTER FOLLOWED BY THE NUMBER 1, REPRESENT LIGHTS THAT HAVE AN EMERGENCY BALLAST AND ARE TO OPERATE AT A LOSS OF POWER.
 - ALL CIRCUITS SHALL BE LABELED AT THE PANEL AND AT THE OUTLET AND FOR FUTURE REFERENCE.
 - FOR DATA/PHONE SYMBOLS SHOWN PROVIDE BOX AND 3/4" CONDUIT STUBBED ABOVE CEILING.
 - VERIFY ALL DATA/PHONE LOCATIONS AND CORRESPONDING I.G. RECEPTS WITH OWNER.
 - VERIFY ALL SPECIAL CONNECTION/OUTLET LOCATIONS WITH OWNER BEFORE ROUGH IN.

FLOOR PLAN - ELECTRICAL

SCALE: 1/4" = 1'-0"